

Quick Install Guide

Compex Wireless-A/G Dual-Band Network Access Point

WPE54AG

Ordering Information: WPE54AG 2a

Version 1.1



Manual Number:
M-0505-V1.1C
Version 1.1
August 2005
FC CE
Wi-Fi
B202
RELIANCE



1. Introduction



The Compex WPE54AG is a dual-band wireless access point that is interoperable with all standard-based 802.11a, 11g and 11b wireless devices.

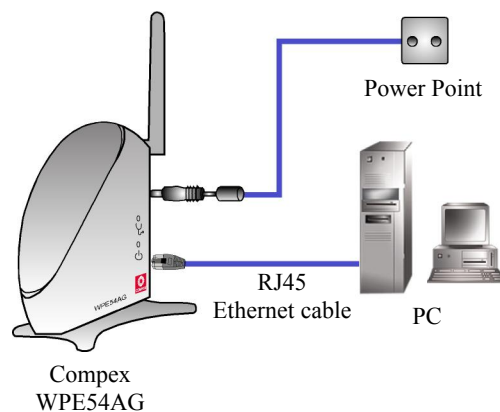
The Compex WPE54AG is a compact and high-performance access point that is designed with support for high security features like enhanced Wi-Fi Protected Access (WPA1/2-PSK, WPA1/2-EAP), IEEE 802.1x Authentication (TLS, TLLS, PEAP, EAP-SIM) and 64-bit or 128-bit Wired Equivalent Privacy.

Compex exclusive wireless LAN technology Wireless Pseudo VLAN further enhances security in wireless hotspot networks in isolating different users into their own VLANs.

Compex WPE54AG is capable of operating in 6 different modes: Access Point Bridging, Access Point Client, Gateway, Wireless Routing Client, Wireless Ethernet Adapter and Wireless Bridge Link; making it suitable for all kinds of wireless applications.

2. Hardware Installation

1. Connect one end of the RJ45 crossover Ethernet cable provided to your PC and the other end to the Ethernet port of your Compex WPE54AG.
2. Next, attach the power adapter supplied in the packaging to the power point.
3. Connect the power plug into the DC jack of your Compex WPE54AG.

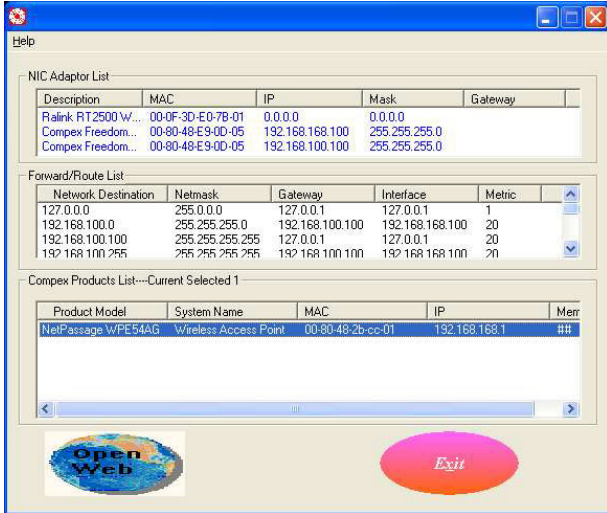


4. Power ON your Compex WPE54AG and your PC. Notice that the LAN Link/ACT and Power LEDs will light up. This indicates that the connection has been established successfully between your Compex WPE54AG and your PC.

3. Access to Web-based Interface

Compex has developed a powerful uConfig utility which provides you hassle-free access to the web-based configuration page. To do so, simply

1. Insert your Product CD into your CD-ROM drive. Go to the **Utilities** section. Click **uConfig** to run the program.
2. The following screen shot will appear. Select **NetPassage WPE54AG** and click on the **OpenWeb** button to access the authentication page.



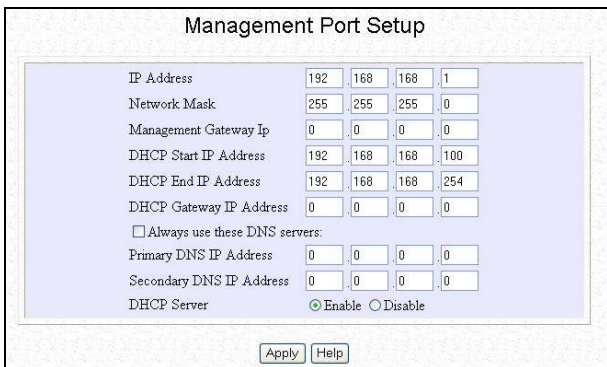
3. The default password is pre-configured as *password* and is already provided in the field below. Click on the **Log On!** button to access the main page.



After accessing the main page of your Compex WPE54AG, you can start doing your configuration

4. Basic Configuration for Compex WPE54AG

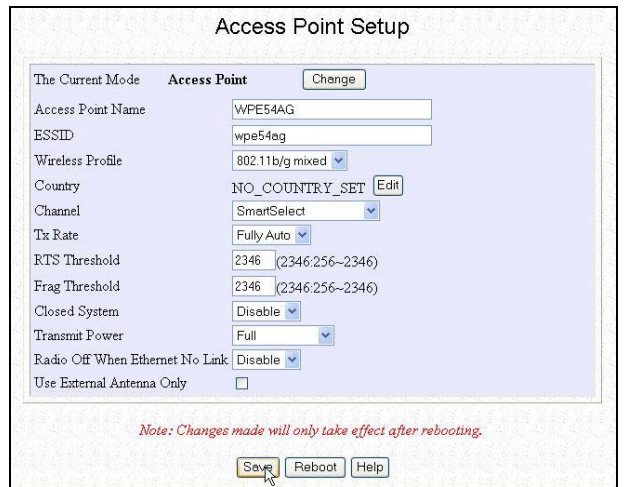
1. To handle automatic IP addressing, go to **Management Port** under the **CONFIGURATION** section.
2. Go to the **DHCP Server** option and select the **Enable** radio button. Click on the **Apply** button to update the changes.



Now, your Compex WPE54AG acts as a DHCP Server which can assign IP address to your PC/clients.

5. WLAN Basic Setup for Compex WPE54AG

1. To configure your Compex WPE54AG for your wireless user, go to **WLAN Basic Setup** from the **CONFIGURATION** section.
2. From your **Access Point Setup** window, key in the **ESSID** that you intend to use for your wireless network.
3. You may leave the frequency channel as **SmartSelect**. This allows your access point to select the channel automatically.
4. Leave the remaining settings as default and click the **Apply** button to update the changes.



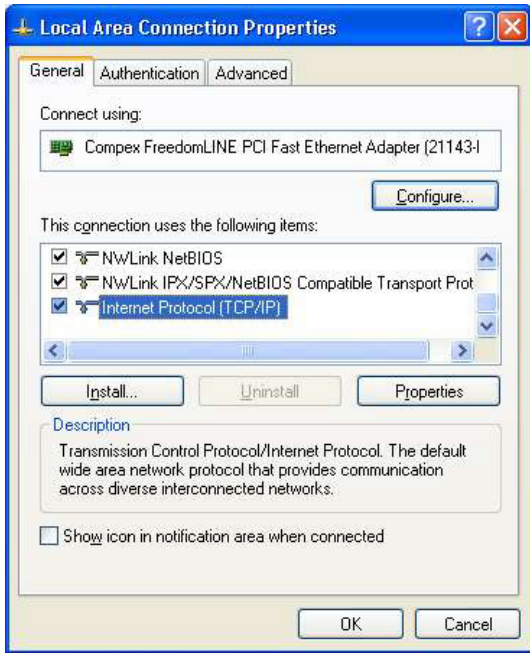
6. TCP/IP Configuration for wireless clients

Generally, automatic IP addressing should be configured for your wireless client PCs or notebooks. You may configure the TCP/IP settings of two PCs using Microsoft windows XP as follows:

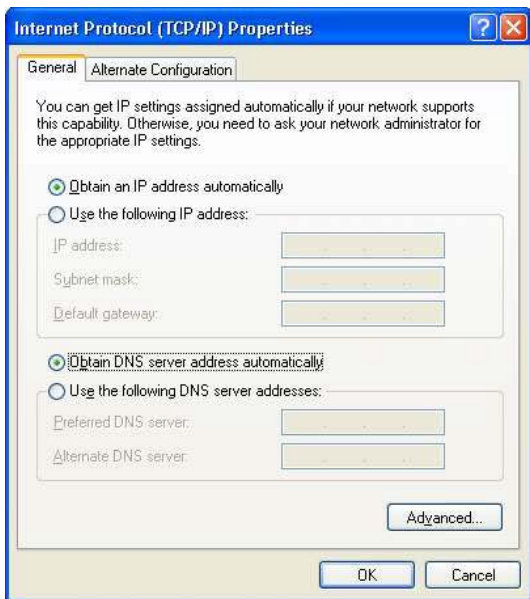
1. From your desktop, right click on **My Network Places** and select **Properties**.
2. Next, right click on your Ethernet Adapter go to **Properties**.



- Highlight **Internet Protocol (TCP/IP)** and click on the **Properties** button.



- Select the radio buttons for **Obtain an IP address automatically** and **Obtain DNS server address automatically**. Click on the **OK** button to update the changes.

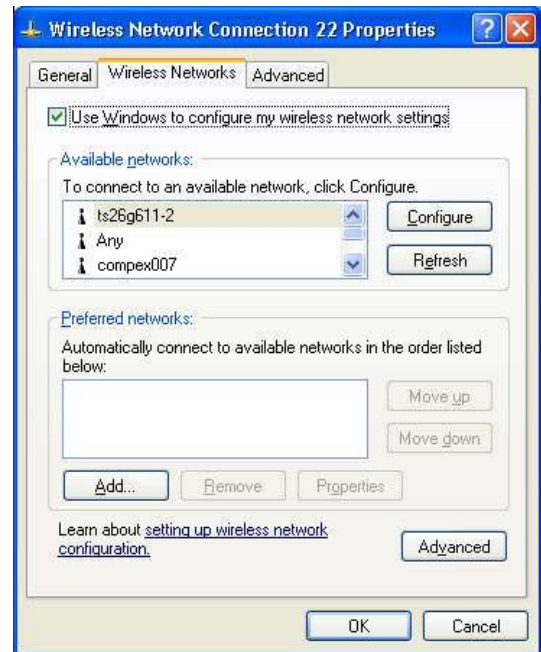


Next, you may set up Windows XP's Wireless Network Connection as follows:

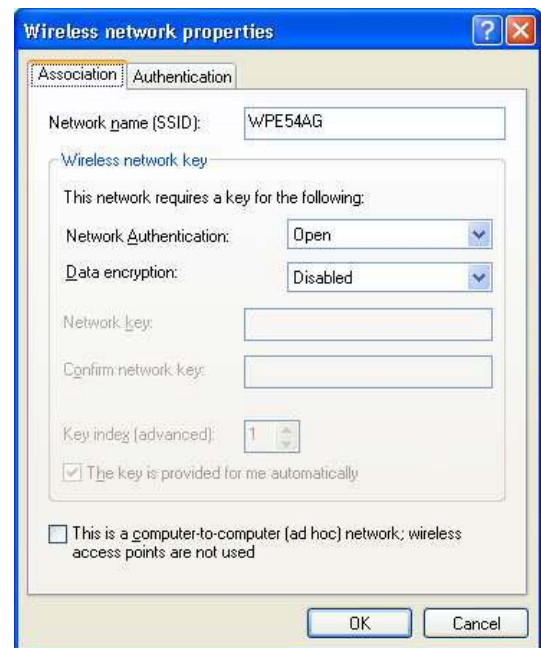
- Right click on **Wireless Network Connection** corresponding to the Wireless Ethernet Adapter you wish to connect to your Compex WPE54AG, and click on **Properties**.



- Go to **Wireless Networks** tab and click on **Add..** button.



- Next, enter the **Network name (SSID)** which must be the same as the ESSID that you input earlier for your access point.

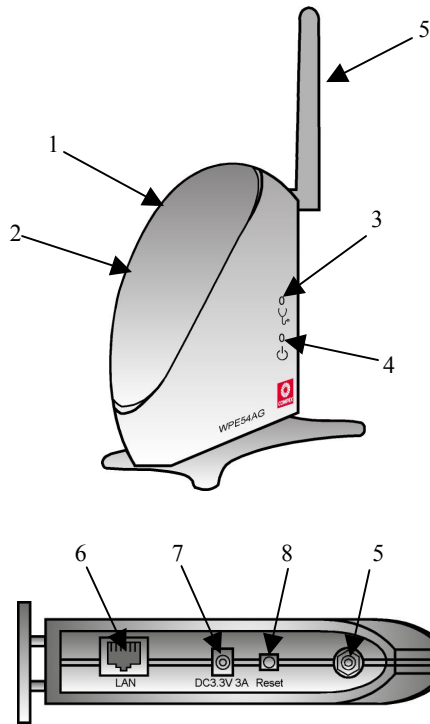


Ensure that the Network name (SSID) value should be the same for all wireless clients in the same wireless network.

For now, you may leave the other information as their default value.
Network Authentication: Open
Data encryption: Disabled

For details in configuring your Compex WPE54AG, kindly refer to the User's Manual stored in the Product CD.

7. Panel Views and Descriptions



	Features	Status and Indications	
1	LAN Link/Act LED	Steady Yellow	Compex WPE54AG is operating at the speed of 10Mbps.
		Steady Green	Compex WPE54AG is operating at the speed of 100Mbps.
2	WLAN Link/Act LED	Steady Green	More than 1 wireless client are present in the wireless network.
		Blinking Green	Activity is detected in the wireless network.
3	Diagnostic LED	Steady Green	The device is in access point or gateway mode.
		Blinking Green	The device is booting.
		Off	The device is in Client mode.
4	Power LED	Steady Blue	Power is supplied to the device.
		Off	No power is supplied to the device.
5	External Antenna	Rotatable antenna	
6	LAN RJ45 Ethernet Port	Use an RJ45 Ethernet cable for connection.	
7	DC 3.3V 3A	Power input of 3.3VDC	
8	Reset button	Push button: <ul style="list-style-type: none"> ◆ 2s to reboot your device ◆ between 2s to 10s to restore to its factory default ◆ > 10s for switching between the different modes 	

This document may become superseded, in which case you may find its latest version at:

<http://www.compex.com.sg/prodspec.asp?f=Manual&s=1>

Disclaimer: Compex, Inc. provides this guide without warranty of any kind, either expressed or implied, including but not limited to the implied warranties of merchantability and fitness for a particular purpose. Compex, Inc. may make improvements and/or changes to the product and/or specifications of the product described in this guide, without prior notice. Compex, Inc. will not be liable for any technical inaccuracies or typographical errors found in this guide. Changes are periodically made to the information contained herein and will be incorporated into later versions of the guide. The information contained is subject to change without prior notice.

Trademark Information: Compex®, ReadyLINK® and MicroHub® are registered trademarks of Compex, Inc. Microsoft Windows and the Windows logo are the trademarks of Microsoft Corp. NetWare is the registered trademark of Novell Inc. All other brand and product names are trademarks or registered trademarks of their respective owners.

Notice: Copyrights © 2004 by Compex, Inc. All rights reserved. Reproduction, adaptation, or translation without prior permission of Compex, Inc. is prohibited, except as allowed under the copyright laws.

Manual Revision by Ann

Manual Number: **M-0505-V1.1C** Version 1.1, August 2005

FCC NOTICE: This device has been tested and found to comply with the limits for a Class B digital device, pursuant to Part 15 of the FCC Rules. These limits are designed to provide reasonable protection against harmful interference in a residential installation. This device generates, uses and can radiate radio frequency energy and, if not installed and used in accordance with the instructions, may cause harmful interference to radio communications. However, there is no guarantee that interference will not occur in a particular installation. If this device does cause harmful interference to radio or television reception, the user is encouraged to try to correct the interference by one or more of the following measures:

- Reorient or relocate the receiving antenna.
- Increase the separation between the computer and receiver.
- Connect the computer into an outlet on a circuit different from that to which the receiver is connected.
- Consult the dealer or an experienced radio / TV technician for help.

Caution: Any changes or modifications not expressly approved by the grantee of this device could void the user's authority to operate the equipment.

FCC Compliance Statement: This device complies with Part 15 of the FCC Rules. Operation is subject to the following two conditions:

- (1) This device may not cause harmful interference, and
- (2) This device must accept any interference received, including interference that may cause undesired operation.

Products that contain a radio transmitter are labeled with FCC ID and may also carry the FCC logo.

Caution: Exposure to Radio Frequency Radiation.

To comply with the FCC RF exposure compliance requirements, the following antenna installation and device operating configurations must be satisfied:

- a. For configurations using the integral antenna, the separation distance between the antenna(s) and any person's body (including hands, wrists, feet and ankles) must be at least 2.5cm (1 inch).
- b. For configurations using an approved external antenna, the separation distance between the antenna and any person's body (including hands, wrists, feet and ankles) must be at least 20cm (8 inch).

The transmitter shall not be collocated with other transmitters or antennas.

ICES 003 Statement

This Class B digital apparatus complies with Canadian ICES-003.

DECLARATION OF CONFORMITY: Compex, Inc. declares that the product:

Product Name: Compex Wireless-A/G Dual-Band Network Access Point

Model No.: WPE54AG conforms to the following Product Standards:

Radiated Emission Standards: ETSI EN 300 328-2; July 2000; FCC: 47 CFR Part 15, Subpart B, ANSI C63.4-1992; 47 CFR Part 15, Subpart C (Section 15.247), ANSI C63.4-1992.

Conducted Emission Standards: ETS 300 826; Nov. 1997.

Immunity Standards: IEC 801-2; IEC 801-3; IEC 801-4

Low Voltage Directive: EN 60 950:1992+A1; 1993+A2; 1993+A3; 1995+A4; 1996+A11; 1997

Therefore, this product is in conformity with the following regional standards: FCC Class B – following the provisions of FCC Part 15 directive; **CE Mark** – following the provisions of the EC directive.

Manufacturer's Name: Compex, Inc.

Address: 840 Columbia Street, Suite B

Brea, CA 92821, USA

WARRANTY REGISTRATION CARD

Register via the Internet at <http://www.cpx.com> or <http://www.compex.com.sg>

[M-0088-V2.4C]



To activate the warranty, please complete this card and return to Compex within ninety (90) days from the date of purchase.

Please e-mail this warranty card to support@compex.com.sg.

Product:	Purchase Date:	Model:	Serial No:
Name:		E-mail:	
Company:			
Address:			
Postal/Zip Code:		Country:	
Phone: ()			

Note:

For purchases within U.S.A and Canada, please fax to Compex, Inc. at (714) 482 0332
For purchases outside U.S.A and Canada, please fax to Compex Systems Pte Ltd at (65) 6280-9947

Cut along the dotted line